

2024

TD2
engineering
& surveying

2023 IN REVIEW

FLASHBACKS

Winter 2024 Issue No. 55

As the calendar flips to a new year, we begin our newsletter series with a 2023 overview by discipline. Remembering where we've been and what has changed.

SURVEY - STRATEGIC TOOLS TECHNOLOGY

Technology, again, played a significant part in a successful 2023. With the acquisition of a drone-mounted lidar scanner and a stand-alone terrestrial Leica RTC360 3D laser scanner, Land Survey is equipped to deliver the level of detail any job requires.

TEAMS RETIREMENTS AND RERUNS

Dave Neef, L.S., retired in May and was soon followed by **Jim Warner, L.S.**, in July. We covered Dave's departure in the Summer issue. But Jim's retirement was startling to many. His expertise was unmatched, as TD2's third employee was hired on 10/13/67. He was a valuable resource to real estate and title professionals, attorneys, and local planning departments and a mentor to other surveyors. Dave and Jim had a combined experience of 96 years. As friends and colleagues with professional and organizational knowledge, how do you replace that?



However, as the personnel landscape changed over 2023, new team members with familiar faces and the old guard have kept the department moving forward. With all our project managers doing a bit more, we've hired **Nick Siedschlag, L.S.**, as a new project manager.

Nick is a versatile and experienced surveyor who previously worked for TD2 in the late 90s and early 2000s. He then worked with his dad at GLS Land Surveying in the Yutan area.

We also welcomed **Mike Skiles** back to TD2 as a CADD designer to manage all the data from the new scanners. Mike worked for TD2 for a 10-year stint before going to the USACE. He returns with expanded experience and abilities that strengthen a growing service area.

In hindsight, it was a strategic year for Land Survey. To achieve our overall quest for quality, we are loaded for bear and in good hands with our growing team of experienced and dedicated field crews, project managers, CADD staff, and processors.



Photos:
Left - Nick Siedschlag
Right - Mike Skiles

ADMIN - THE PERSONAL TOUCH

TEAM SHELLY HOSCH, ADMINISTRATIVE SPECIALIST

While many businesses have done away with answering their phones and welcoming clients at the front door, we are happy to maintain the personal touch and introduce **Shelly Hosch**. Shelly comes to us with an interesting backstory of nearly 30 years in the horse racing industry as the Executive Secretary/Treasurer of the Nebraska Horsemen's Benevolent and Protective Association. It was a job that developed her diverse skills to fulfill the HBPA's

mission of "Horsemen Helping Horsemen" in an industry that has changed immensely over the years.

Horse racing also runs in the family with her husband Greg, who is a State Steward of the Minnesota Racing Commission at Canterbury Park.

Welcome, Shelly.



CIVIL - ROOM 2 GROW TOOLS EXPANSION/RENOVATION

If you've visited us in person, you know we are bursting at the seams. TD2 began the renovations of former tenant space in Building 2 to consolidate Construction Phase Services and Geotechnical Engineering. Locating the testing labs with the professionals who use them the most. Shifting the Soils Lab to Building 2 allows Survey to expand and modernize.

TEAMS REGISTRATION

Ryan Ruenholl, Civil Engineer, P.E.

Congratulations to Ryan for passing his Civil Engineering PE exam. A 2018 graduate from Dordt University in Sioux Center, Iowa. Ryan had his job lined up and joined TD2 just weeks after graduation. He appreciates how TD2's size and collegial atmosphere with civil professionals close at hand mirrors his college experience of smaller class sizes and personalized teaching approach. His advice to students is to get familiar with Civil 3D, as it was most helpful for quickly getting up to speed in a professional engineering environment.



Ryan has been an enthusiastic contributor to the TD2 workplace over the last 5.5 years. He is a multi-talented and versatile engineer. His confidence has grown while working on projects of all types. But, he likes (SID) Sanitary and Improvement District development the most for its scope, scale, flexibility, and variety. There is "room to work." Coming to TD2 with his FAA drone pilot license, Ryan has been a great help on drone projects. This gets him out from behind the computer and has given him a better understanding and perspective of his project sites.

APPLAUSE!

SUMMER INTERNSHIPS

This is the perfect time for students to apply for Civil field positions, and you don't need any experience. Ten spots are available for Field Support Technicians, which may entail work in the field and in the lab with soils, concrete, and GPS.

Soils related:

- Soils Compaction Testing (Nuclear Density Gauge) - Field
- Soil Proctor Testing for optimal moisture and maximum dry density calculation - Lab
- Soil testing of backfill samples from Drill Rig - Lab

Concrete related:

- Concrete Testing (air, slump, and concrete cylinders) - Field
- Concrete Cylinder Strength Testing - Lab

GPS:

- Data collection of as-built conditions with GPS equipment - Field

For a successful internship you need a valid driver's license, a willingness to learn, and a curiosity about the construction and engineering field. Earn while you learn. Email your interest and resume to TD2MAIL@TD2CO.com or fill out our online application at <https://www.td2co.com/careers/>.

JOIN US!

PROJECTS

Some notable 2023 civil projects from a variety of market sectors include:

- Bellevue University Fieldhouse
- Ft. Calhoun Drainage District Restoration (Water Resources) and Township County Roadway Restoration
- Lauritzen Gardens Family Garden and Greenhouse
- MH Landing, NE Corner 72nd & Grover
- Schram Road Improvements
- SID #598 Calarosa Interceptor Sewer
- SID #616 The Hill 168th & State Improvements
- St. Patrick Catholic Church - Indian Pointe

Keeping busy.

STRUCTURAL - RISING TO THE OCCASION

TOOLS/TEAM EQUIPPED/ADEPT

TD2 Structural is a busy department of engineers and support staff who have developed into a powerhouse team. They have the confidence, personnel, and capacity to deliver on the most challenging projects like Joslyn.

PROJECT JOSLYN ART MUSEUM EXPANSION & RENOVATION

Selected by the Joslyn Art Museum to lead the design process for the recent expansion and renovation, Snøhetta, an award-winning, global architecture practice, has reimagined the fine arts landmark. Their relevant project experience, design reputation, and sensitivity to the existing buildings won the day.

The resulting big vision reorients the Museum entrance to increase visibility from the street. It extends the existing glass atrium, creating views of the sculpture garden, interweaving the surrounding landscape, and then transitions from glass to the solid monumental Rhonda and Howard Hawks Pavilion.

Global design firms like Snøhetta have world-class design standards and expectations but need local connections and expertise to make their big vision stand. Working with local architecture firm Alley Poyner Macchietto Architecture as the Architect of Record and other local professionals, TD2 was invited into the working process as the local Structural Engineer of Record. We are honored to be included in this impressive list of professionals.

PROJECT TEAM

- Architect of Record: Alley Poyner Macchietto Architecture, Omaha
- Design Architect: Snøhetta, New York
- Landscape Architect: Snøhetta, New York
- Structural Engineer of Record: Thompson Dreesen & Dorner, Inc., Omaha
- Structural Engineer: MKA, Seattle
- MEPFP Engineer, A/V, Telecom, LEED Documentation: Morrissey Engineering, Omaha
- Specialty Lighting Design, Acoustics: Arup, New York
- Sustainability, Energy Analysis, LEED Administration: A10, New York
- Façade Consulting: Front, New York
- Civil Engineer: Olsson, Omaha
- Commissioning Agent: BranchPattern, Omaha
- General Contractor: Kiewit Building Group, Omaha
- Project Manager: Anser Advisory (formerly Ascent), Chicago

TD2 TEAM LEADERSHIP/DESIGN

TD2 principal and structural engineer **Drew Johnson, P.E.**, has led the TD2 Team and worked on the project for the last few years. Drew has a particular affinity for projects with a high design focus. As a visual artist and a talented structural engineer, he relishes being part of the creative team and watching the project come together from the largest beam to the smallest detail.

TD2 worked in concert with Magnusson Klemencic Associates (MKA), an award-winning global structural and civil engineering firm headquartered in Seattle. MKA and TD2 worked closely through the Design Development phase, and TD2 completed the remainder of the project, including construction administration. TD2's local presence and relationships with local contractors proved invaluable as the design was finalized and constructed. With a department of 11 engineers, 1 BIM manager, a structural technician, and extensive knowledge of various structural types, the TD2 structural team is ideally suited to designing large, complex projects like this.

You'll be able to see it for yourself later this year.

TRUE TO THE VISION It is remarkable how similar the aerial is to the rendering. See how visions come true using a combination of Moare renderings and Multivista construction photos to illustrate how the structural systems you never see achieve the effortless design elements of a skillfully planned space.



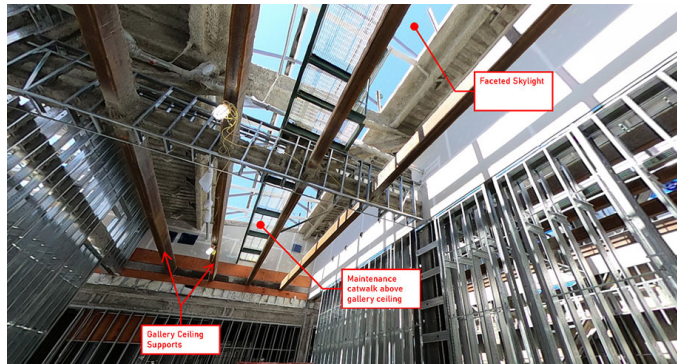
WEIGHTLESSNESS – SOLID BUT FLOATING The lightness of the 40-foot cantilever over the main entrance is achieved by full-story-height steel trusses.



COMPLEX ATRIUM STAIRCASE GEOMETRY Regional companies made the 60-foot, double-curved staircase possible. PVS Structures from Carter Lake was the primary structural steel fabricator, and Rebellion Fabrication from Wahoo put it together.



APPEARANCES CAN BE DECEIVING? The structural systems beneath a seamless presentation required complex coordination for multiple staircases, curved glass facades, hidden catwalks, gallery ceiling supports, faceted roof skylights, specialty doors, and concealed roller shades. Below - high-strength steel rods hang the second floor from the roof structure to create the Pavilion's shallow second floor with minimal columns. Below - callouts identify the gallery ceiling supports, the maintenance catwalk above the gallery ceiling, and the faceted skylight.



Thompson, Dressen & Dorner, Inc.

Douglas Dressen, PE
Civil Engineer, President
dsdressen@td2co.com

TD2mail@td2co.com
402/330-8860



Omaha:
10836 Old Mill Road
Omaha, NE 68154
O:402/330-8860 F:402/330-5866

Sioux Falls:
5000 S. Minnesota Ave., Unit 312
Sioux Falls, SD 57108
O:605/951-0886

FIND AND FOLLOW US ON:

